

(STAR.OSH7)

0100CT11

SIMVENTURE TAG ALONG ROUTE (XNAV)

OSHKOSH, WISCONSIN
WITTMAN RGNL (OSH)

NOTE: Pilots are encouraged to coordinate flights together in groups.
 NOTE: This STAR is for planning purposes only. SEA
 NOTE: Jet MTOW 18,000 lbs. or less at SimVenture.
 NOTE: Altitudes are MOCA only.
 NOTE: VFR or IFR at pilots discretion.

ROUTE DESCRIPTION PART 1

North STAR:

- Seattle to Centennial (SEA.STAR.OSH7)
- Portland to Centennial (PDX.STAR.OSH7)

Sun STAR:

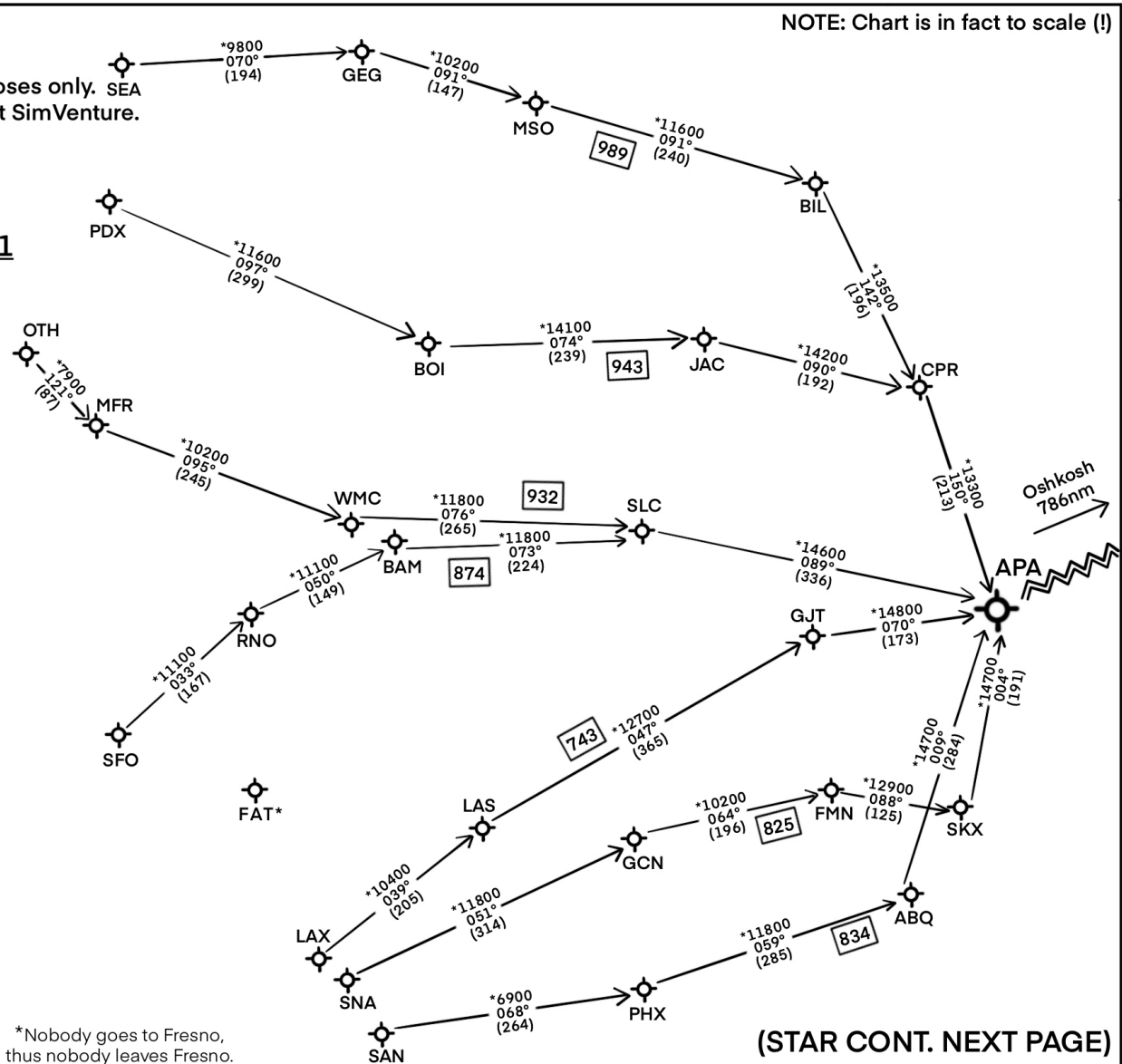
- North Bend to Centennial (OTH.STAR.OSH7)
- San Francisco to Centennial (SFO.STAR.OSH7)

South STAR:

- Los Angeles to Centennial (LAX.STAR.OSH7)
- John Wayne to Centennial (SNA.STAR.OSH7)
- Lindbergh to Centennial (SAN.STAR.OSH7)

ROUTE DESCRIPTION PART 2
 CENTENNIAL TO OSHKOSH
 IS ON FOLLOWING PAGE

*Nobody goes to Fresno,
 thus nobody leaves Fresno.



NOTE: Chart is in fact to scale (!)

SIMVENTURE TAG ALONG ROUTE (XNAV)

WITTMAN RGNL (OSH)
OSHKOSH, WISCONSIN

(STAR.OSH7)

10111

PE-2024 (EHA)

(STAR CONT. NEXT PAGE)

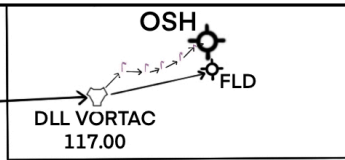
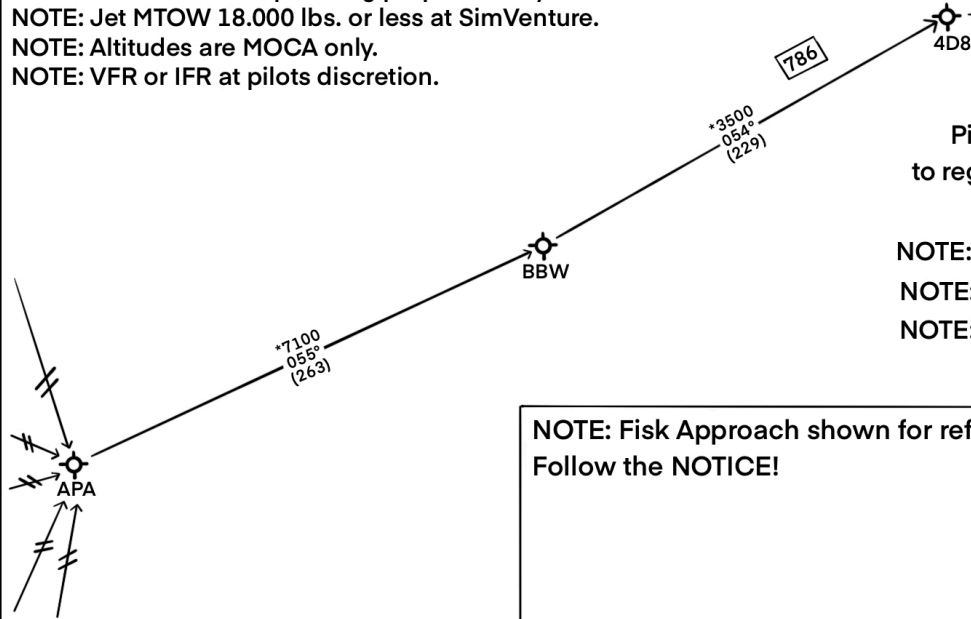
(STAR.OSH7)

01OCT11

SIMVENTURE TAG ALONG ROUTE (XNAV)

OSHKOSH, WISCONSIN
WITTMAN RGNL (OSH)

NOTE: Pilots are encouraged to coordinate flights together in groups.
 NOTE: This STAR is for planning purposes only.
 NOTE: Jet MTOW 18,000 lbs. or less at SimVenture.
 NOTE: Altitudes are MOCA only.
 NOTE: VFR or IFR at pilots discretion.



See inset below.

Pilots are requested to consider landing first at Fond du Lac to regroup, thus avoiding unprepared entry into Fisk Approach.

NOTE: Read and follow the NOTICE. (RTFN!)
 NOTE: Monitor Oshkosh ATIS (125.90) at least 60nm from KOSH.
 NOTE: Monitor Fisk Approach 120.70.

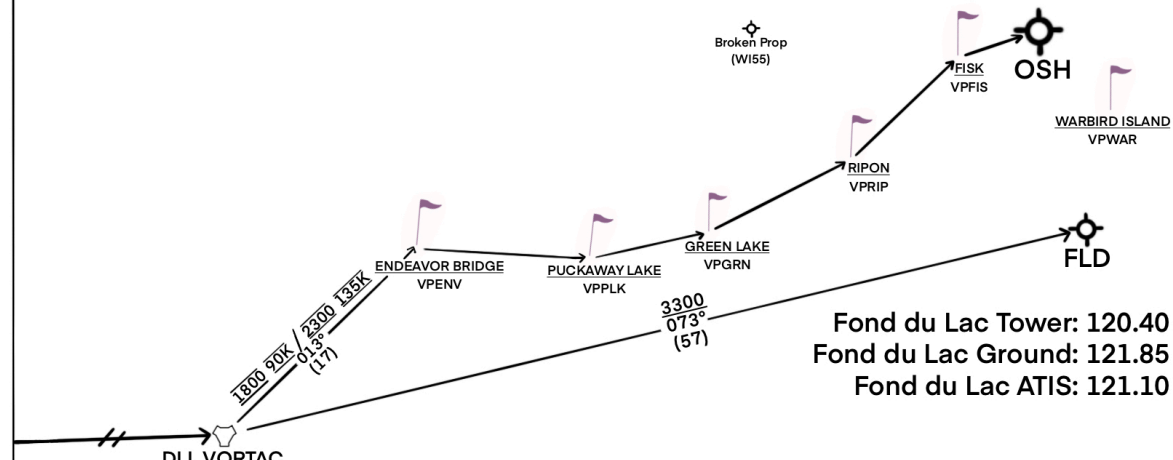
NOTE: Fisk Approach shown for reference only.
 Follow the NOTICE!

Oshkosh ATIS: 125.90
 Fisk Approach: 120.70
 Oshkosh Tower North: 118.50
 Oshkosh Tower South: 126.60

ROUTE DESCRIPTION PART 2

Broken Prop STAR:

Centennial to Oshkosh (APA.STAR.OSH)
 Centennial to Fond du Lac (APA.STAR.FLD)



Fond du Lac Tower: 120.40
 Fond du Lac Ground: 121.85
 Fond du Lac ATIS: 121.10

NOTE: Charts are in fact to scale (!)

NOTE: Charts are in fact to scale (!)

(STAR.OSH7)

10111

SIMVENTURE TAG ALONG ROUTE (XNAV)

WITTMAN RGNL (OSH)
OSHKOSH, WISCONSIN

PE-2024 (EHA)